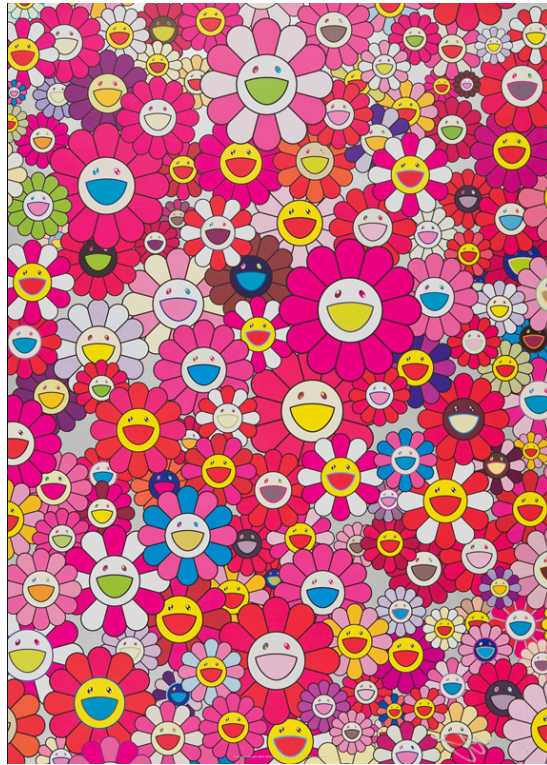


JASKI GALLERY

AMSTERDAM



An Homage to Monopink 1960 B

lithograph

2012

74 x 53 cm

JASKI GALLERY

AMSTERDAM

Takashi Murakami

One of the biggest names in the contemporary art world, Japanese artist Takashi Murakami's work is immediately recognizable for its popping, candylike colours and anime-esque aesthetic.

Often featuring playful imagery like smiling flowers, oversized, blinking eyes, and Technicolour mushrooms, Murakami's work shows he is the true heir to Warhol in his ability to appropriate commercial, popular images inspired by anime and manga (Japanese comics) into high-quality pieces of fine art. Because of his commercial appeal, his work has morphed into all kinds of media ranging from keychains and mugs to a 2009 collaboration with French couture powerhouse Louis Vuitton.

But Murakami is not to be written off as just another Pop artist as his work is clearly informed by the Japanese art-historical tradition. As founder of the postmodern art movement 'Superflat', which combines the graphic practices of contemporary Japanese culture with the flattening print and painting traditions of its rich past, Murakami has pioneered an aesthetic that has been taken up by numerous followers and is himself regarded almost as colourful as his works.