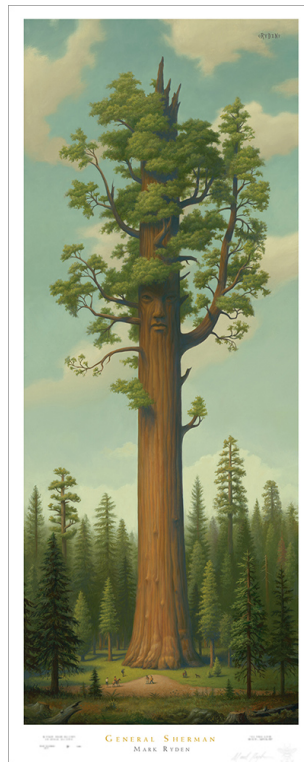


JASKI GALLERY

AMSTERDAM



General Sherman

offset lithograph

2007

100 x 42 cm

JASKI GALLERY

AMSTERDAM

Mark Ryden

Blending themes of pop culture with techniques reminiscent of the old masters, Mark Ryden has created a singular style that blurs the traditional boundaries between high and low art. His work first garnered attention in the 1990s when he ushered in a new genre of painting, "Pop Surrealism", dragging a host of followers in his wake. Ryden has trumped the initial surrealist strategies by choosing subject matter loaded with cultural connotation.

Ryden's vocabulary ranges from cryptic to cute, treading a fine line between nostalgic cliché and disturbing archetype. Seduced by his infinitely detailed and meticulously glazed surfaces, the viewer is confronted with the juxtaposition of childhood innocence with the mysterious recesses of the soul. A subtle disquiet inhabits his paintings; the work is achingly beautiful as it hints at darker psychic stuff beneath the surface of cultural kitsch. In Ryden's world, cherubic girls elbow up against strange and mysterious figures. Ornately carved frames lend the paintings a baroque exuberance that adds gravity to their enigmatic themes.

Mark Ryden graduated from Pasadena's Art Center College of Design in 1987 with a Bachelor in Fine Arts.

His paintings have been shown in museums and galleries worldwide, including a career-spanning retrospective Cámara de las maravillas at the Centro de Arte Contemporáneo in Málaga, as well as an earlier retrospective "Wondertooneel" at the Frye Museum of Art in Seattle and Pasadena Museum of California Art.

Mark Ryden currently lives and works in Portland, Oregon.